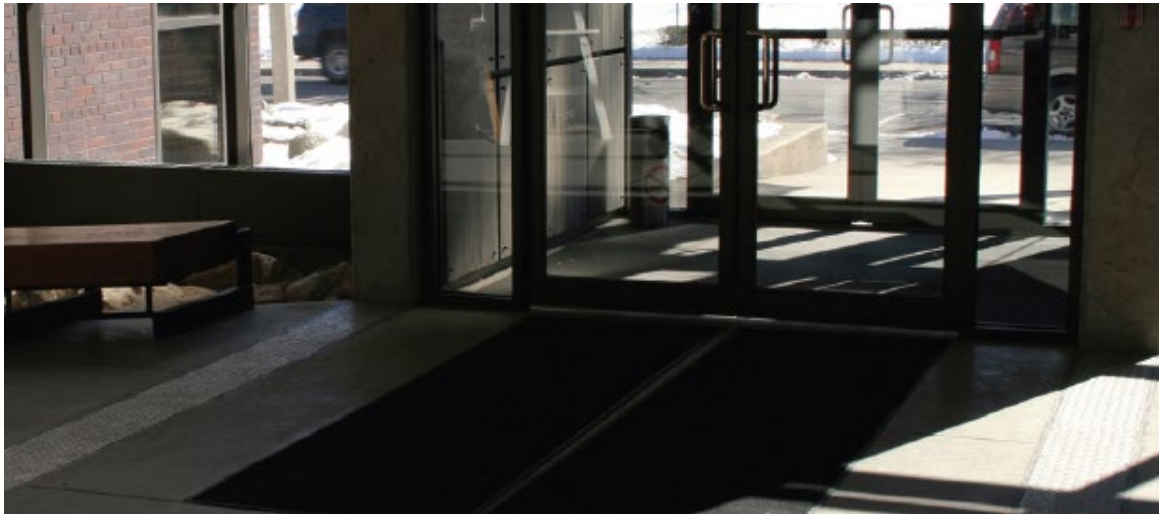




Prepare Now for Wet Weather

We know that this time of year, leading from Fall into Winter, brings with it lots of rain, and sometimes snow. Moisture can be tracked through the entrances of buildings by foot traffic and from water draining from umbrellas and rainwear. The use of floor mats is one method of addressing this issue: outdoor mats can be used to scrape off particulate matter and snow or ice, with secondary scrape/wipe mats within foyers and lobbies.

How long should interior mats be? The Carpet and Rug Institute recommends that a minimum of **12 to 15 feet of mat** coverage be provided to remove 90% of tracked-in soil and water. On a rainy day, if you notice wet footprints beyond the end of your interior mats, you need longer mats.



What else should you consider?

- Is someone assigned to monitor floor conditions during times of heavy traffic?
- Are mops readily available to dry floors as needed?
- Do you have designated areas to place wet umbrellas, or do you supply wet umbrella bags, like those at right?
 - Do you have wet floor cones, like the one at left, at least three feet tall, to warn people of potential wet floors? The type pictured here is preferred over the "tent" type that often fall and become trip hazards.



Plan NOW to prevent slips and falls!